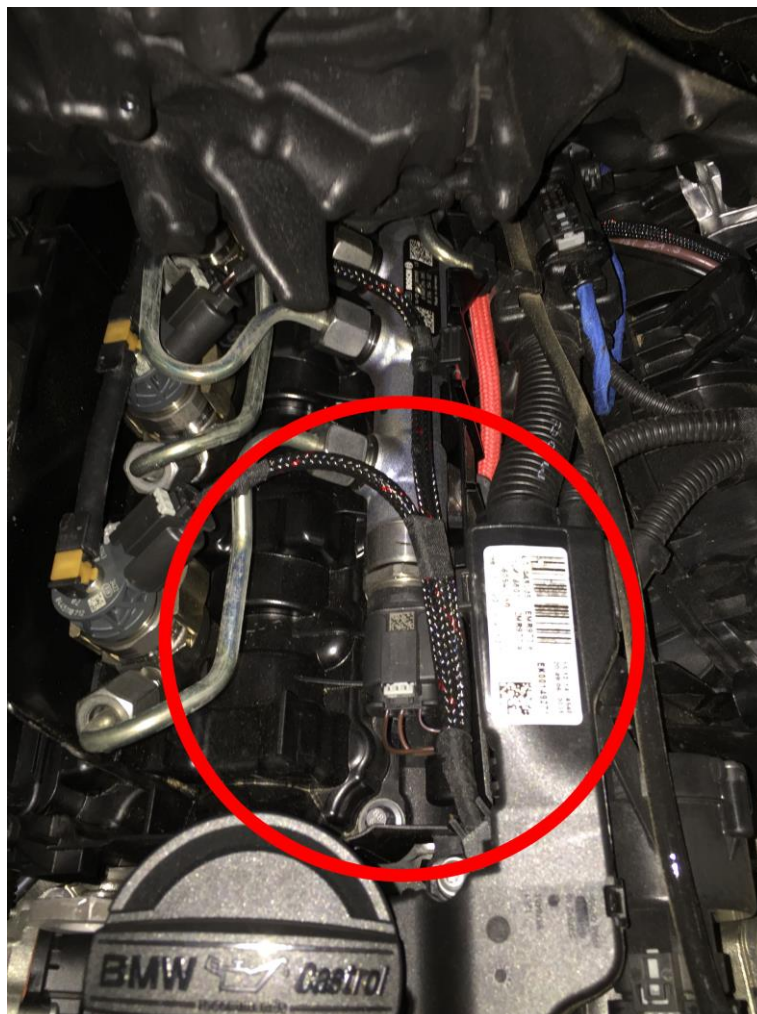


BMW X3 2.0d 184HP 2011+

1. Box type: VT401200-010.
2. Remove the engine cover.



3. Find plug for rail pressure sensor. Disconnect it and connect box adapter between.



4. Find plug for manifold pressure sensor. Disconnect it and connect box adapter between.



5. If box is equipped with yellow-red wire connect it to positive terminal in an engine compartment.